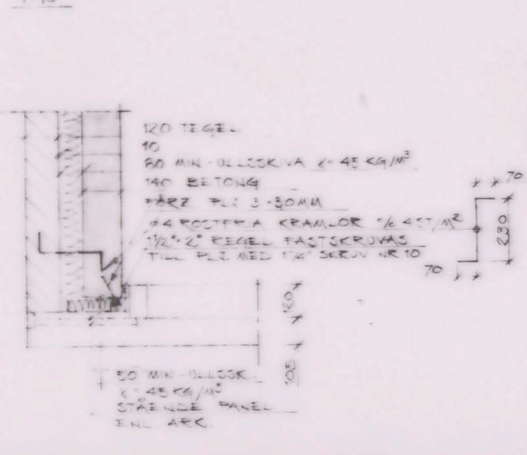
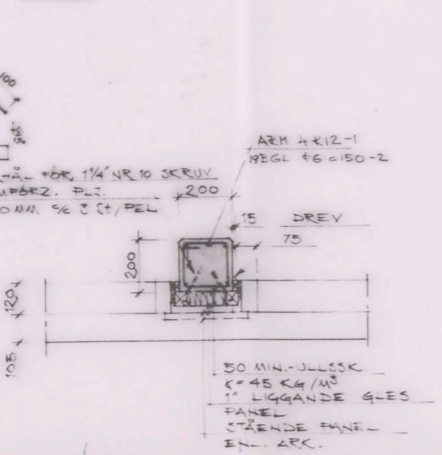


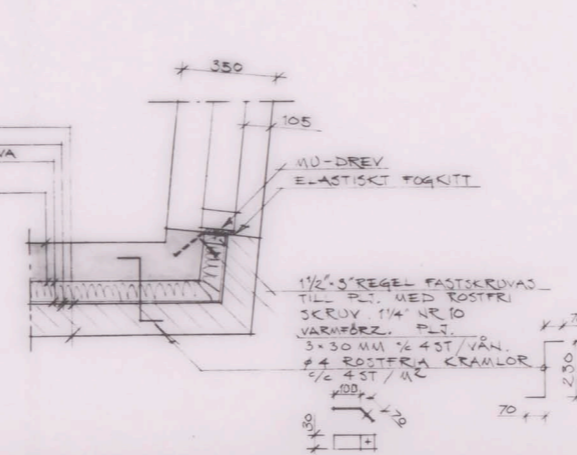
DETALI 701 G
1:10



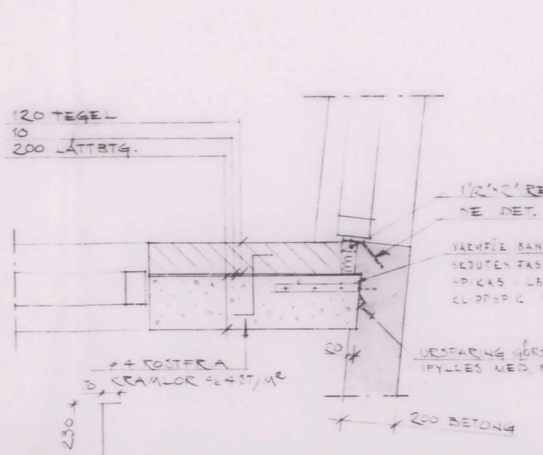
PELARE 702 G
1:10



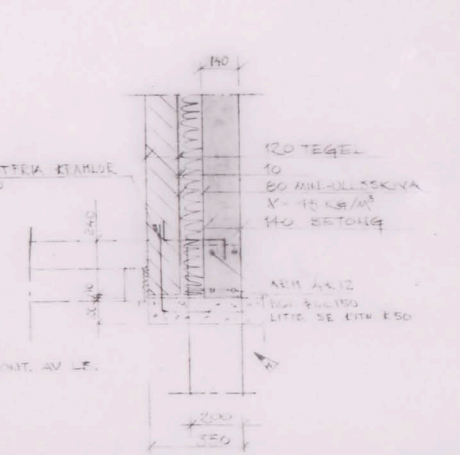
DETALI 703 G
1:10



DETALI 704 G
1:10

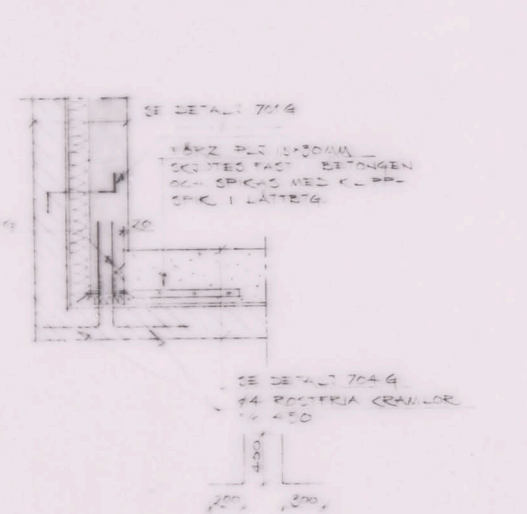


DETALI 705 G
1:10



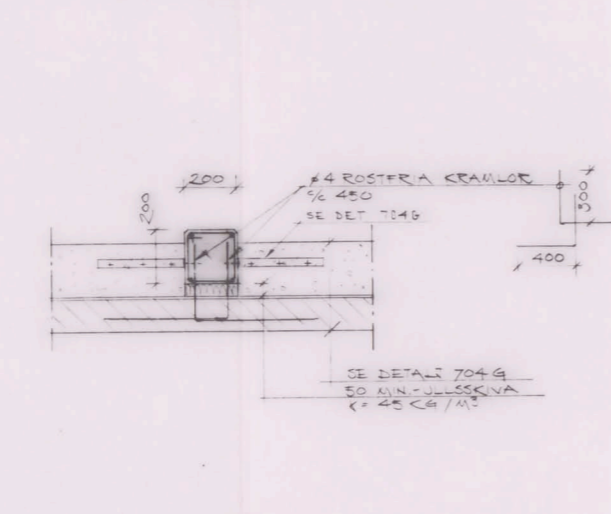
DETALI 701 G
1:10

GENOM BRÖSTNING:



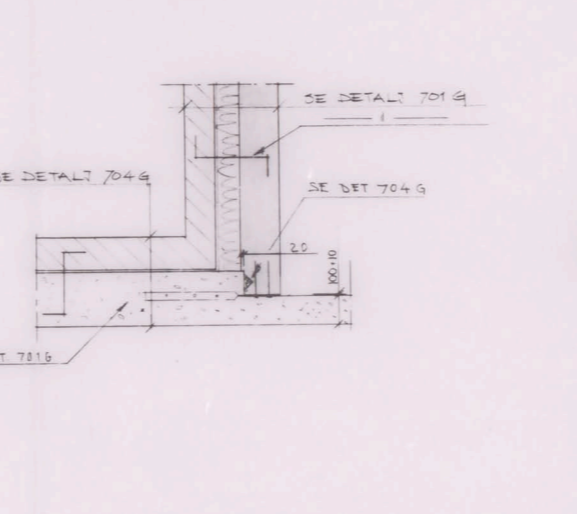
PELARE 702 G
1:10

GENOM BRÖSTNING:



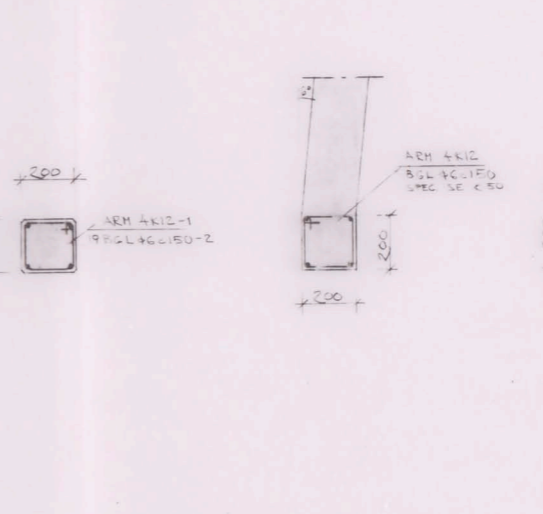
DETALI 703 G
1:10

GENOM BRÖSTNING:



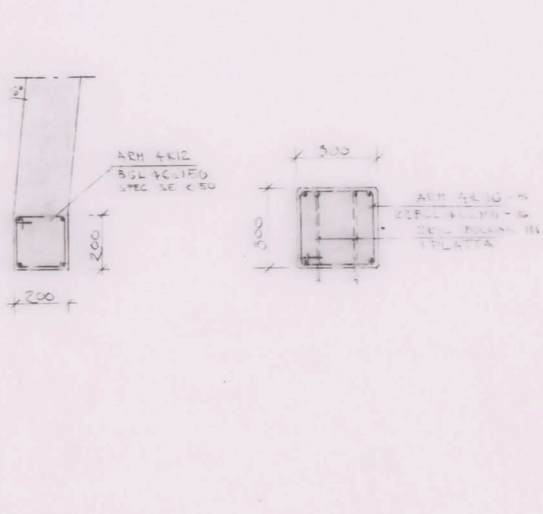
PELARE P706 G
1:10

1:10



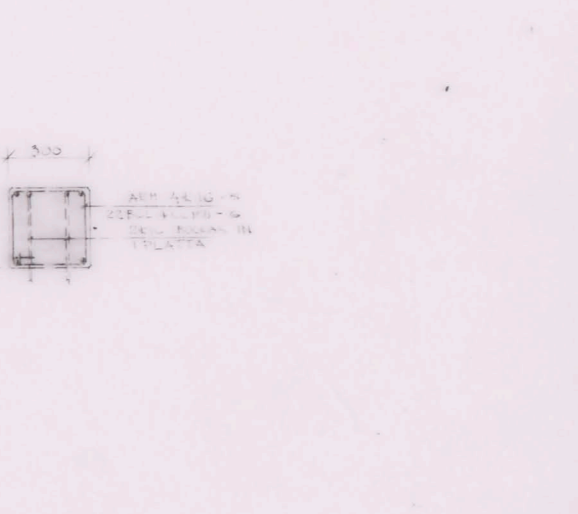
PELARE P707 G
1:10

1:10



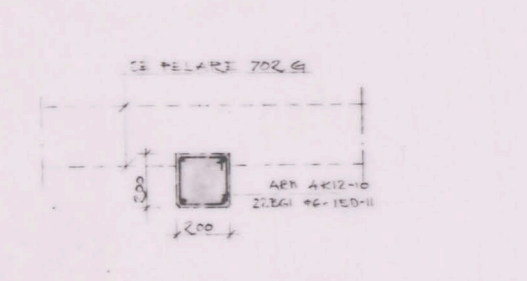
PELARE P708 G
1:10

1:10



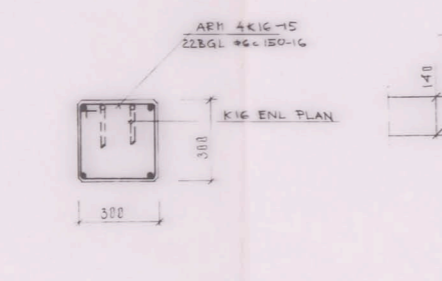
PELARE 709 G
1:10

1:10



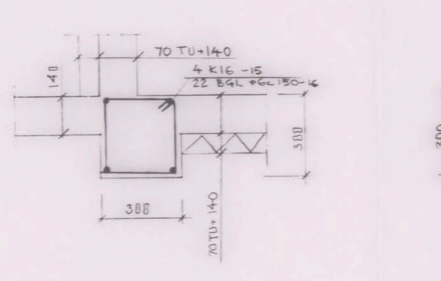
PELARE 302 G
1:10

1:10



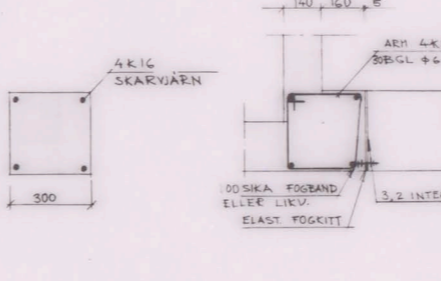
PELARE 303 G
1:10

1:10



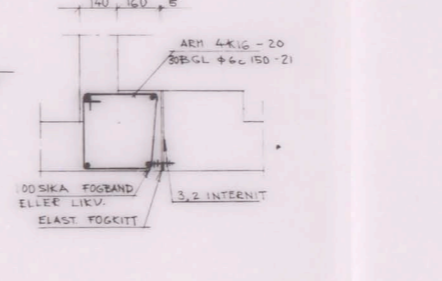
PELARE 304 G
1:10

1:10



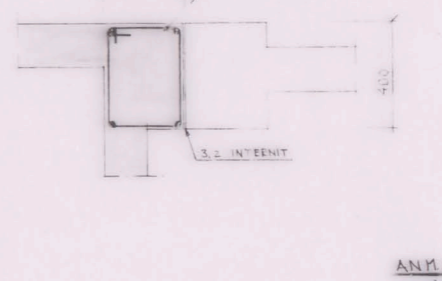
PELARE 201 G
1:10

1:10



PELARE 202 G
1:10

1:10



ANM:
ALLMÄNNA FÖRESKRIFTER SE RITN. KÖ
ARM UNDER PREF-KALKAR SE ARMEN
RITN. K 50 = K 71
TILLHÖRANDE ARM SPEC. K 6/1
ARM. SOM EI HAR LITTE. PÅ DET.
FINNES PÅ RESP. PLAN.

STADSBYGGNADSKONTORET
Dnr. IV. 183/64
8 MRS 1966

ARBETSITNING

BREDÅNGSSKOLAN KV. CONCORDIA BREDÅNGS CENTRUM, STOCKHOLM		REV. 5	REV. 4	REV. 3	REV. 2	REV. 1
A. J. H. 102 K. S. TUNGVIST ABE BAR KUN. 2000. 1. STICK C.		TEL. 325404	HUS 6	DETALI 701-709	PELARE 702-709	PELARE 702-709
E. ÖVREBYGGENDE INGENJÖR VALFRID PERSSON ABE		870722	PELARE 702-709	PELARE 702-709	PELARE 702-709	PELARE 702-709
V. P. PERSSON KONSTRUKTÖR SÄFFLE 9. STICK		940130	KONSTRUKTÖR	PELARE 702-709	PELARE 702-709	PELARE 702-709
E. REKONSTR. & FÖRSTÄNK PERSSON GRUND & STICK C		310850	REKONSTRUKTÖR	PELARE 702-709	PELARE 702-709	PELARE 702-709

48201